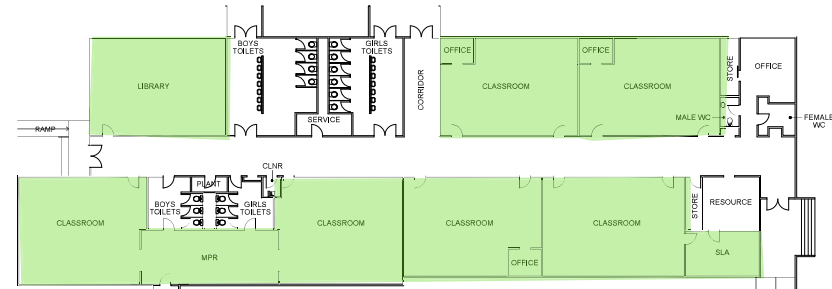
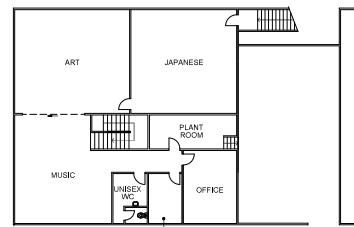


PRESCHOOL

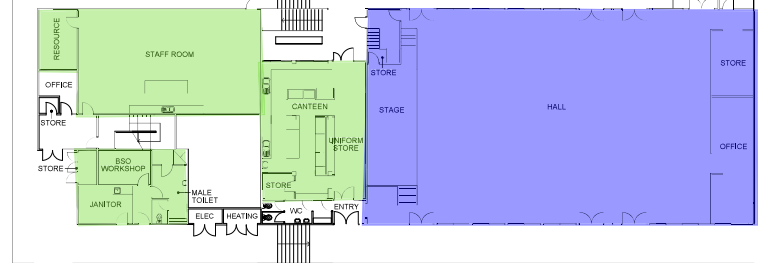


PRIMARY BLOCK

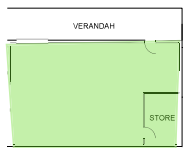


FIRST FLOOR

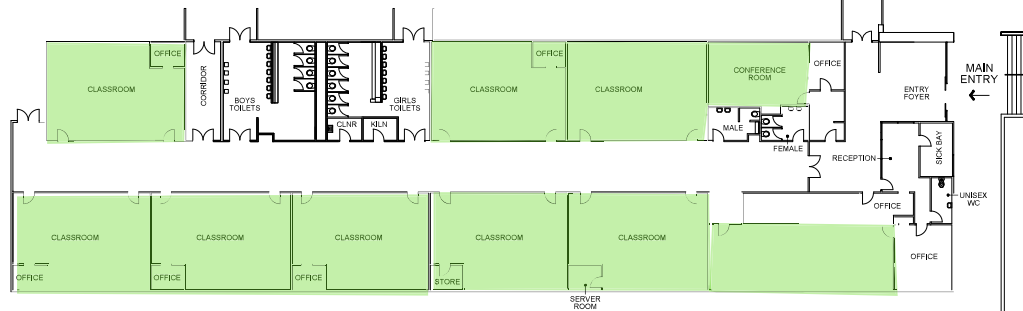
FIRST FLOOR WILL NOT BE OCCUPIED



G.P. BLOCK

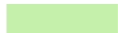


ENVIRONMENT BUILDING



INFANTS

### IAQ Map Legend - Winter Operation



Natural ventilation: Operable windows and/or louvres should be used to manage fresh air, balancing thermal comfort and ventilation.



Mechanical ventilation: Fresh air is introduced by the heating, ventilation and air conditioning system when in operation. Windows can remain closed and no action is required by the school.

Note: White spaces are to be used in accordance with COVID-19 requirements and current health advice.

ISSUE	AMENDMENT	DRAWN	VER'D	APP'D	DATE



SCALE  
1:400  
DATE  
FEB 2016  
DRAWING SHEET SIZE = A3



ACT Government  
Education and Training

PROJECT  
FARRER PRIMARY SCHOOL  
INFRASTRUCTURE & CAPITAL WORKS  
SCHOOL LAYOUT PLAN